

SOFTEC DSP EV

DUPLEX MONEX Softening Systems with single valves

Our SOFTEC DSP EV series is used primarily as a twin system in industry. Due to the large water volumes of up to 60 m³/h, the systems are equipped with single-valve controls.

Features:

- Double softening system
- Continuously soft water
- Simple installation and commissioning
- Programmable logic control
- Automatic regeneration*

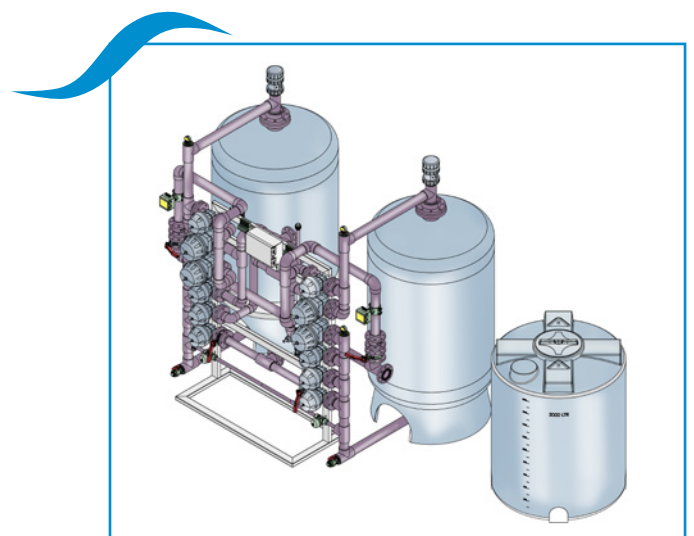
Components:

- GRP filter tank
- Cation resin
- Single valve control
- Brine tank
- Brine valve
- Pipework including all required fittings and measuring instruments for configuration of the system and control of hydraulic parameters

Operating conditions:

The requirements for the water inflow to the systems are listed below:

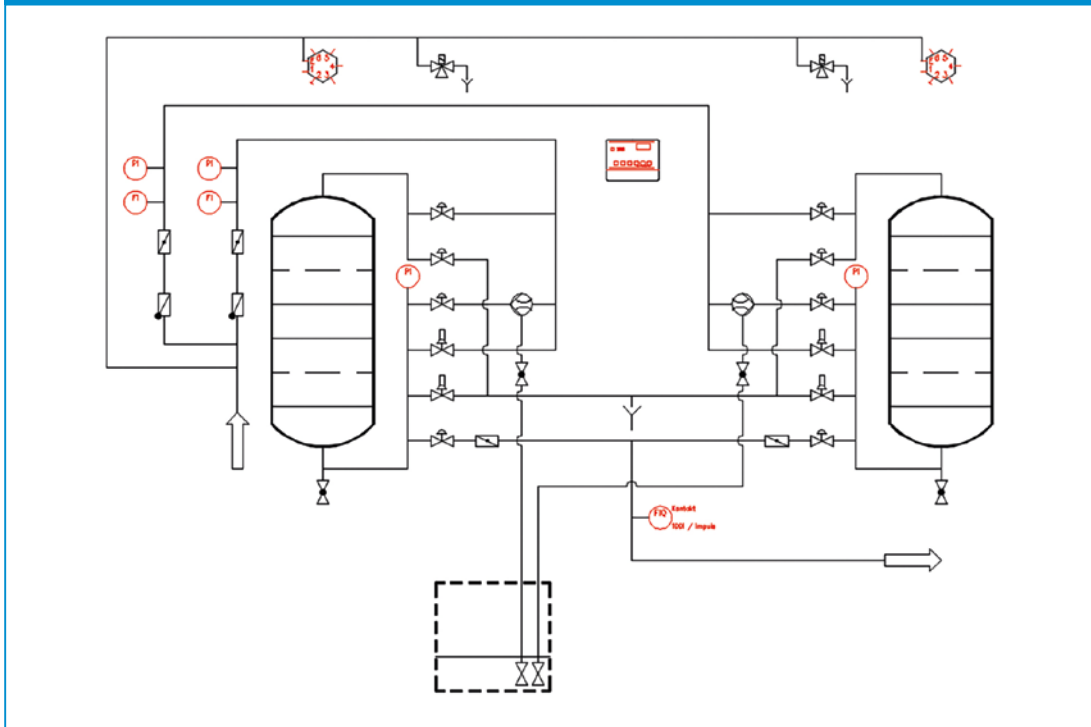
Inlet pressure	2-6 bar
Inlet temperature	5-40° C
Free chlorine (Cl ₂)	< 0.1 mg/l
Iron (Fe)	< 0.1 mg/l
Manganese (Mn)	< 0.1 mg/l
Inlet water	free of oil, oxidants, colloids and particles



*For regeneration of the system, we recommend using pure salt for technical applications in tablet form, granulate or liquid brine.

**All data are approximate values

Process diagram



Example diagram

Technical data:

Type		DSP500 EV	DSP575 EV	DSP750 EV	DSP1000 EV	DSP1200 EV	DSP2500 EV
Output*	m ³ /h max.	18	20	26	35	40	60
Operating mode		Direct current regeneration					
Differential pressure*	bar	1.0					
Electrical connection		230V, 50Hz					
Resin qty. per tank	(l)	500	575	750	1 000	1 200	2 500
Resin capacity	m ³ x °dH	2000	2300	3000	4000	4800	10000
Tank size	Inches	30 x 72		36 x 72	42 x 72	48 x 72	63 x 86
Brine tank	Volume (l)	1000		1500	2000		3000
Connection		DN50	DN65		DN80		DN100
Dimensions*	Height (mm)	2400	2400	2400	2400	2400	2800
	Width (mm)	3000	3000	4000	4500	5000	5500
	Depth (mm)	1100	1100	1500	1800	2000	2500

*All data are approximate values